

24900 PASEO DEL RANCHO ROAD | CALABASAS, CA 91302



SITE PLAN



Paseo Del Rancho Rd

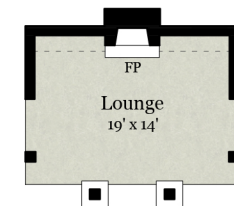
Rendering by Floor Plan Visuals.  
 All measurements are approximate. While deemed reliable, no information on these floor plans should be relied upon without independent verification.

Nicki LaPorta | Karen Crystal  
 Tel: 805.390.6591 | 805.625.0304  
 www.nickiandkaren.com

24900 PASEO DEL RANCHO ROAD | CALABASAS, CA 91302



**UPPER LEVEL**  
2,905 SQ FT



**POOL PAVILION**  
305 SQ FT - Unfinished

**GUEST APARTMENT**  
1,320 SQ FT

Rendering by Floor Plan Visuals.  
All measurements are approximate. While deemed reliable, no information on these floor plans should be relied upon without independent verification.

Nicki LaPorta | Karen Crystal  
Tel: 805.390.6591 | 805.625.0304  
www.nickiandkaren.com



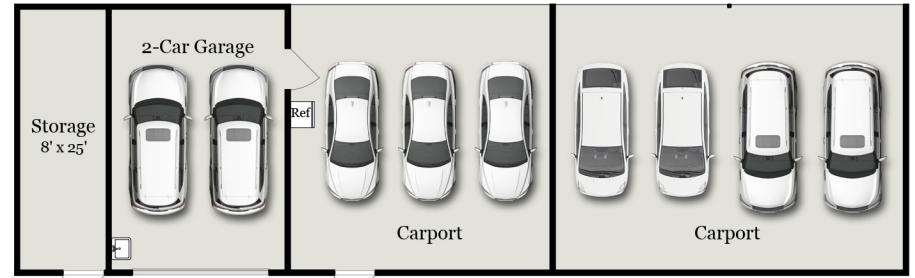
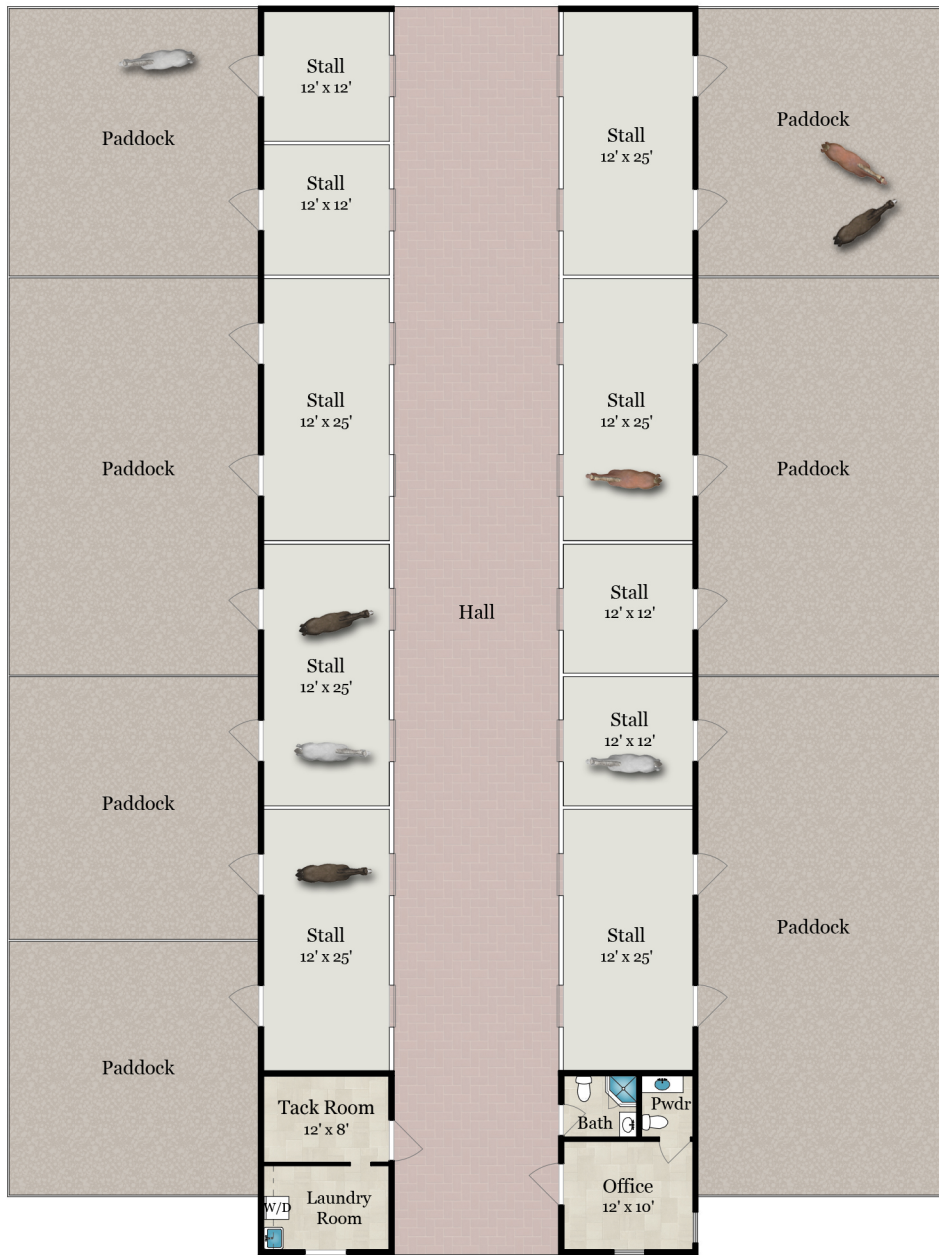
24900 PASEO DEL RANCHO ROAD | CALABASAS, CA 91302



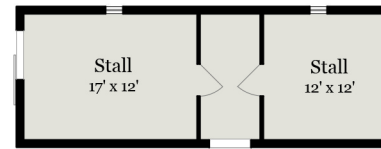
MAIN LEVEL  
4,735 SQ FT

Rendering by Floor Plan Visuals.  
All measurements are approximate. While deemed reliable, no information on these floor plans should be relied upon without independent verification.

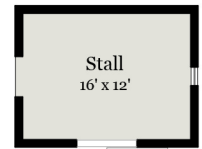
24900 PASEO DEL RANCHO ROAD | CALABASAS, CA 91302



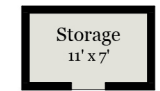
**DETACHED GARAGE/ CARPORT**  
2,200 SQ FT - Unfinished



**DAY BARN 1**  
480 SQ FT - Unfinished



**DAY BARN 2**  
235 SQ FT - Unfinished



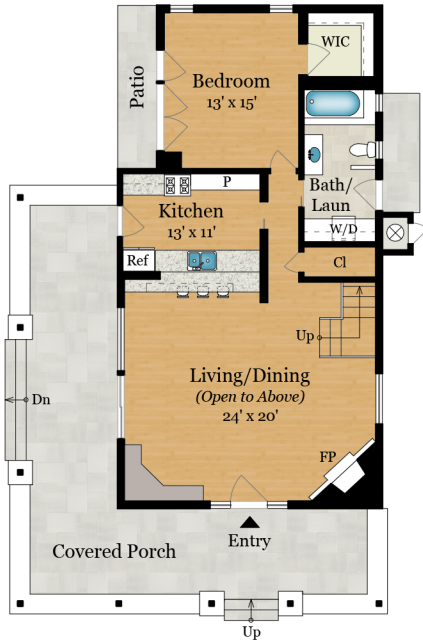
**SHED**  
100 SQ FT - Unfinished

**16-STALL BARN**  
455 SQ FT - Finished  
4,530 SQ FT - Unfinished

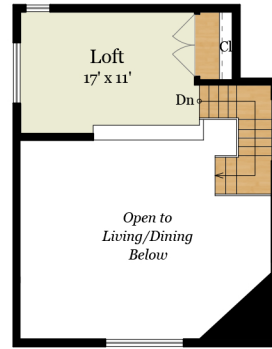
Rendering by Floor Plan Visuals.  
All measurements are approximate. While deemed reliable, no information on these floor plans should be relied upon without independent verification.



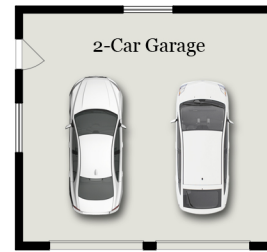
24900 PASEO DEL RANCHO ROAD | CALABASAS, CA 91302



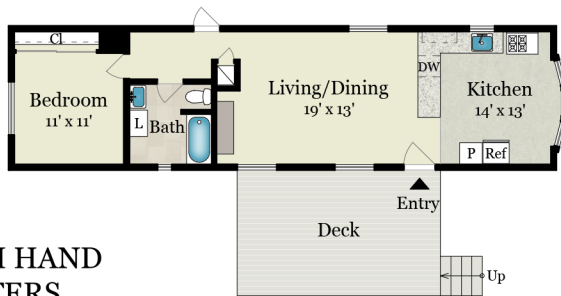
**GUEST HOUSE**  
MAIN LEVEL - 1,150 SQ FT



**GUEST HOUSE**  
UPPER LEVEL - 320 SQ FT



**DETACHED GARAGE**  
GUEST HOUSE  
580 SQ FT - Unfinished



**RANCH HAND QUARTERS**  
720 SQ FT

**Estimated Total Finished Square Footage: 11,605 SQ FT**

Above-Grade: 11,605 SQ FT Below-Grade: N/A  
Calculated per ANSI Standard Z765-2003

- Main Residence: 7,640 SQ FT
  - Main Level: 4,735 SQ FT
  - Upper Level : 2,905 SQ FT
- Guest Apartment: 1,320 SQ FT
- Guest House: 1,470 SQ FT
  - Main Level: 1,150 SQ FT
  - Upper Level : 320 SQ FT
- Ranch Hand Quarters: 720 SQ FT
- 16- Stall Barn : 455 SQ FT

**Unfinished Square Footage: 9,715 SQ FT**

- 3-Car Garage (Main House-Main Level): 1,040 SQ FT
- Storage (Main House-Main Level): 235 SQ FT
- Mech Room (Guest House): 10 SQ FT
- Detached Garage (Guest House) : 580 SQ FT
- Pool Pavilion: 305 SQ FT
- 16- Stall Barn : 4,530 SQ FT
- Detached Garage/ Carport: 2,200 SQ FT
- Day Barn 1: 480 SQ FT
- Day Barn 2: 235 SQ FT
- Shed: 100 SQ FT

**Estimated Total Finished & Unfinished Square Footage: 21,320 SQ FT**