



1451 EAST LA LOMA AVENUE | SOMIS, CA 93066

Ewing & Associates

Sotheby's INTERNATIONAL REALTY

Estimated Total Finished Square Footage: 10,410 SQ FT

Above-Grade: 10,410 SQ FT Below-Grade: N/A
Plus 690 SQ FT 2-Car Garage on Main Residence Main Level
Plus 630 SQ FT 2-Car Garage on Main Residence Main Level
Plus 290 SQ FT Garage on Guest House Main Level
Calculated per ANSI Standard Z765-2003

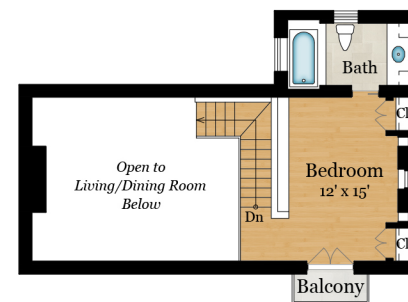
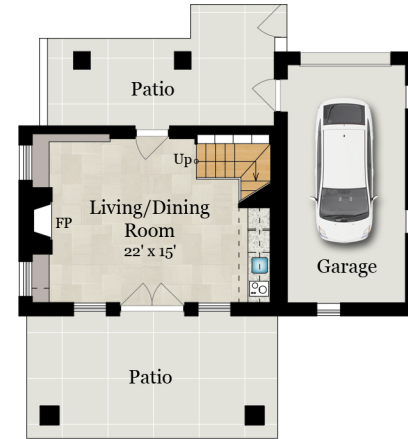
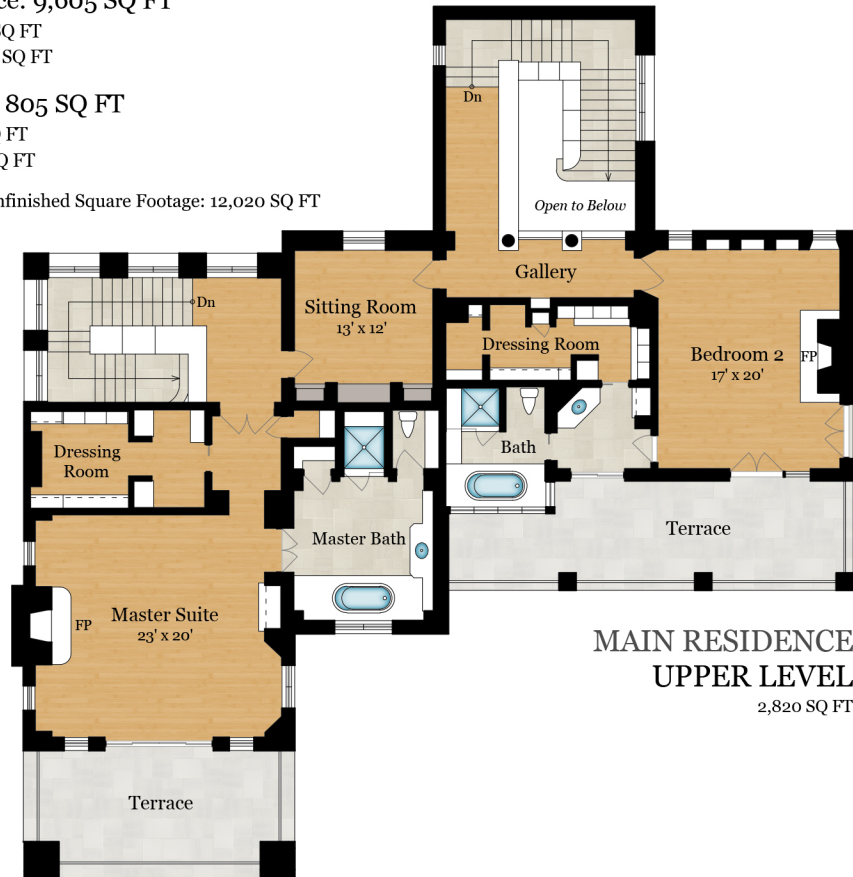
• Main Residence: 9,605 SQ FT

Main Level: 6,785 SQ FT
Upper Level: 2,820 SQ FT

• Guest House : 805 SQ FT

Main Level: 420 SQ FT
Upper Level: 385 SQ FT

* Total Finished & Unfinished Square Footage: 12,020 SQ FT



Rendering by Floor Plan Visuals.
All measurements are approximate. While deemed reliable, no information on these floor plans should be relied upon without independent verification.