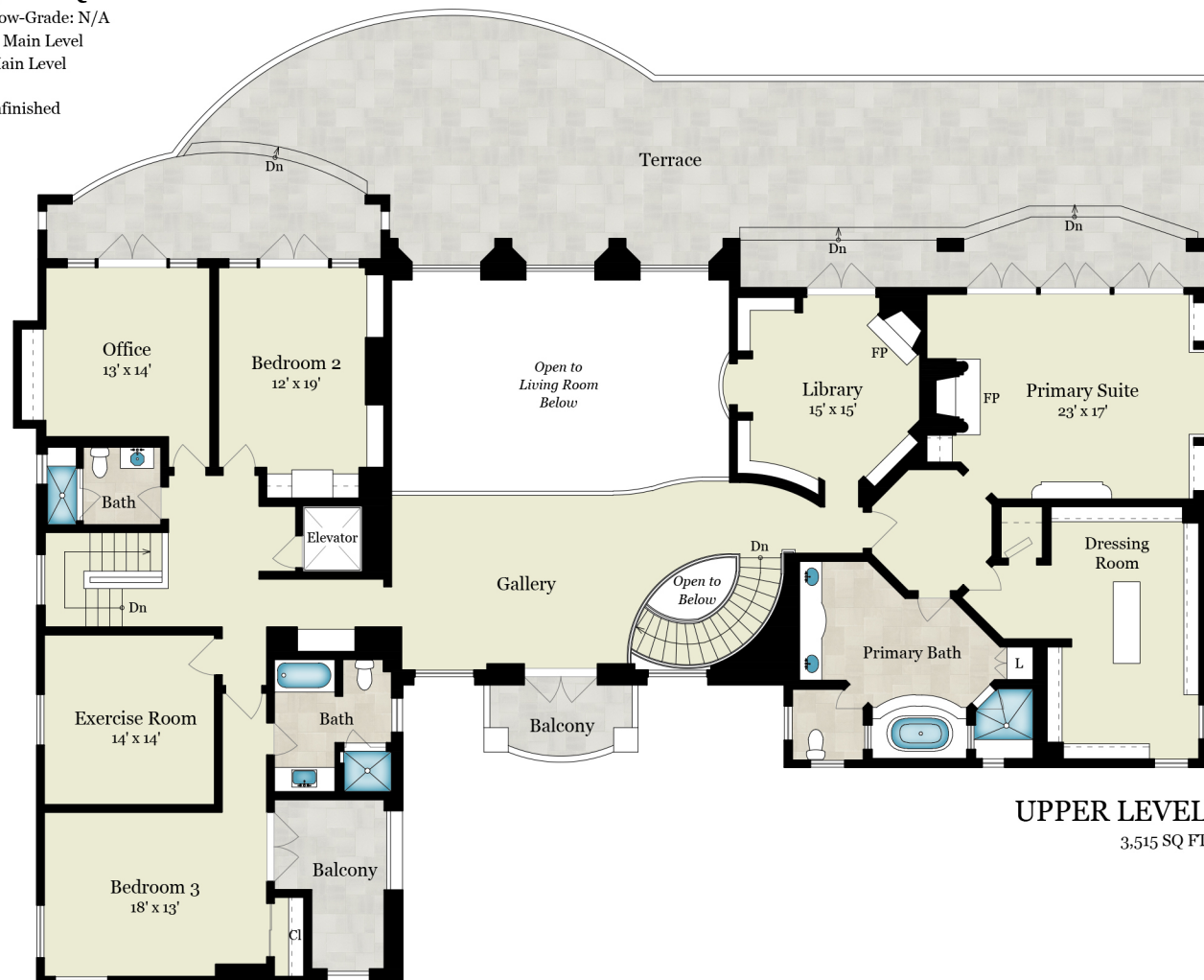


32156 OAKSHORE DRIVE | WESTLAKE VILLAGE, CA 91361

Estimated Total Finished Square Footage: 8,110 SQ FT

Above-Grade: 8,110 SQ FT Below-Grade: N/A
Plus 745 SQ FT 3-Car Garage on Main Level
Plus 25 SQ FT Mech Room on Main Level

* Estimated Total Finished & Unfinished
Square Footage: 8,880 SQ FT



UPPER LEVEL
3,515 SQ FT



Rendering by Floor Plan Visuals.
All measurements are approximate. While deemed reliable, no information
on these floor plans should be relied upon without independent verification.

Presented by: **Nicki LaPorta & Karen Crystal, COMPASS**
Tel: 805.390.6591 **DRE# 01233940 & DRE# 01346860**
Email: TeamNickiandKaren@compass.com