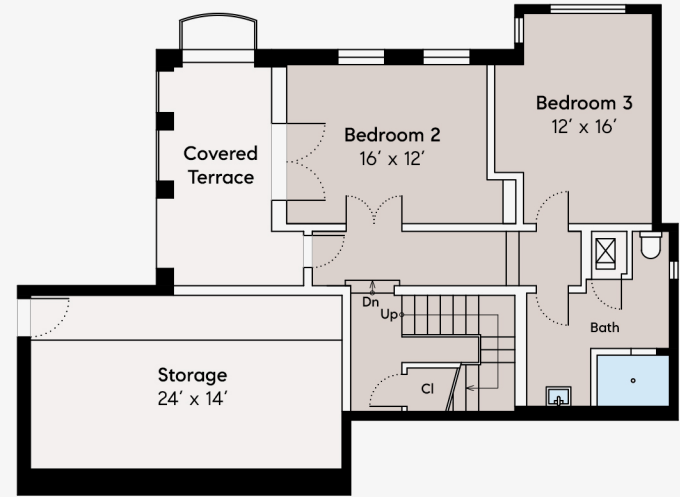
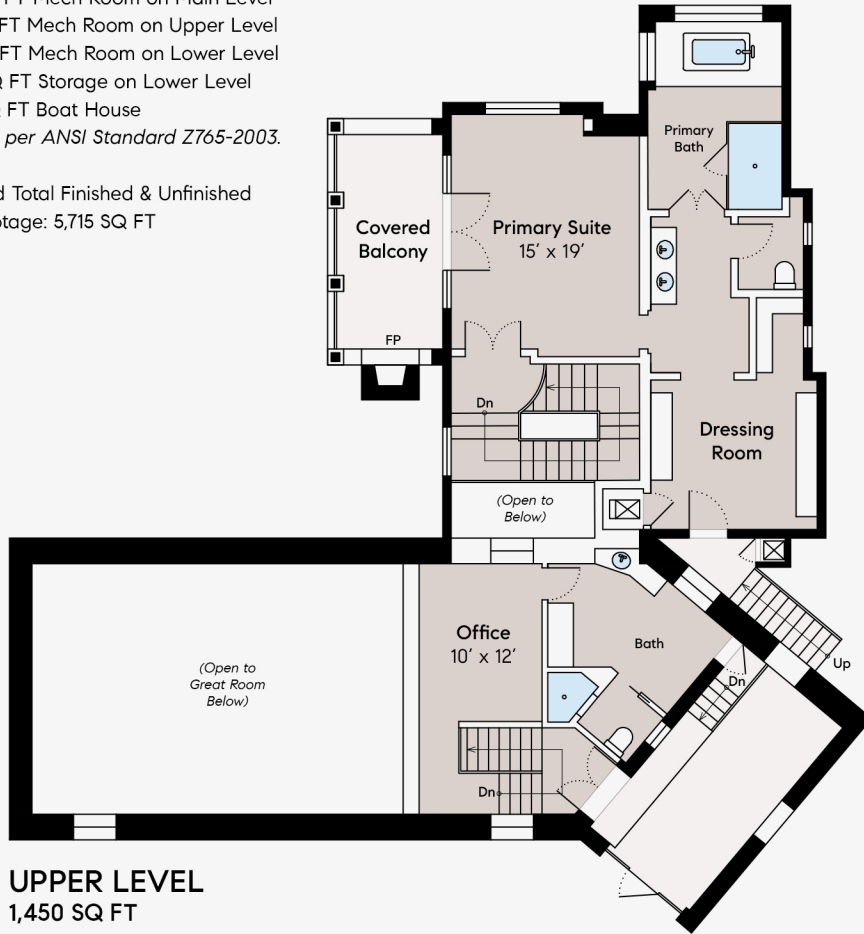






**Estimated Total Finished
Square Footage: 5,070 SQ FT**

Above-Grade: 4,205 SQ FT Below Grade: 865 SQ FT
 Plus 30 SQ FT Mech Room on Main Level
 Plus 15 SQ FT Mech Room on Upper Level
 Plus 10 SQ FT Mech Room on Lower Level
 Plus 415 SQ FT Storage on Lower Level
 Plus 175 SQ FT Boat House
 Calculated per ANSI Standard Z765-2003.

* Estimated Total Finished & Unfinished
 Square Footage: 5,715 SQ FT



-  Window
-  Door
-  Interior Wall
-  Exterior Wall

**1999 Trentham Road
Lake Sherwood**

3 Bed | 3 Bath

